



*Luxury  
Living  
Redefined*



## Tranquillity the forever quest of man

Since the dawn of civilization man has always desired a place of quiet and peace, a place where he can be, and express himself and has gone to many lengths to find his own private world of tranquility. Connect Builders and Developers with over 25 years of experience in the business of creating homes understand the need like no other and have created a piece of heaven in it's latest offering "Connect Tranquil"

Set amidst the luscious greenery of Mangalore and surrounded by the breathtaking view of the surrounding hills that is fresh and alive with an abundance of nature.

## Creating Tranquillity

Connect Builders & Developers lives up to its name of offering features and facilities that make for a superlative lifestyle. An imposing façade of two towers, set off by a magnificent open courtyard, verdant with exquisite landscaping and luxury amenities.

Designed with large balconies that face the outside and offers the residents a breathtaking view of nature and a private experience of tranquility.

For luxurious moments of leisure, there is a club house with indoor games, fully equipped gym, children's play area, jogging track, swimming pool, 100% power back up, ample car parking for owners and visitors, round the clock water supply, service elevators, garbage chutes, piped gas, wi-fi connectivity, 24-hour security, state-of-the-art fire protection system, walk-in-wardrobes, digital TV connectivity and solar water heaters that make living in Connect Tranquil the ultimate experience of life.

## A Tranquil Experience

Connect Tranquil provides a lifestyle befitting today's successful professional.

Sunday mornings at the pool, Billiards and table tennis with the guys after work, The sauna and Jacuzzi to unwind in, a jogging trail and gym to work out. Connect Tranquil has it all, so you and your family can enjoy an unmatched quality of life.



## Luxury and Tranquillity inside and out

Pampered is the word that best describes living at Connect Tranquil, with the complete amenities of a luxury resort at your doorstep. An elegant club house, swimming pool, range of indoor and outdoor games, restaurants, general store and above all, exclusivity.

Premium specifications and superior finishes ensure that each apartment is a private world of luxury. A showcase of technology, all apartments at Connect Tranquil will benefit from Wi Fi connectivity and seamless living, allowing you to be in control.

Living at Connect Tranquil is an ultimate experience. You are in a private world, one of beauty, serenity and timelessness.

## A world class development

Spread over 80,000 square feet of prime, luxuriant space, Connect Tranquil comprises 128 two, three and four bedroom apartments and penthouses set amidst exquisite landscaping and amenities.

Connect Tranquil is a masterpiece of architecture and design. Each of its ground plus ten storey towers, standing proud and tall, rise majestically into the sky. Its quality living spaces are internationally styled and Vaastu compliant for perfect harmony.

Connect Tranquil with over 72% open space, is the place to live in. Large living, recreation and landscaped spaces are the hallmark of Connect Tranquil. All perfectly located and interconnected to provide you with privacy, comfort and convenience.

## An outstanding living and investment opportunity

With its prime location, its close proximity to world class health facilities, surrounded by Medical & Engineering Colleges and the Mangalore University, convenient accessibility to the primary IT workspaces, upcoming SEZ and the INFOSYS campus, Connect Tranquil will always command a premium.

With its world-class design, quality construction and perfect location, to own an apartment at Connect Tranquil promises not just an outstanding lifestyle, but also a remarkable investment opportunity. One that has all the ingredients for continuing marketability and price appreciation.



*Tranquillity Inside and Out*

# Specifications



**STRUCTURE:** RCC framed structure building with seismic Zone II compliance with concrete solid block masonry.

**PLASTERING:** All internal walls are plastered with lime punning. Ceiling cornices in living and dining rooms

**PAINTING:** Acrylic emulsion paint with roller finish interiors. Blending of Sandtex and cement paint for exteriors

**FLOORING:** Vitrified tile flooring for living, dining and bedroom. Option of wooden flooring at extra cost. Ceramic tiles for balconies.

**TOILETS:** Ceramic flooring Ceramic glazed tiles dado up to 7 feet with elegant boarders in all toilets. Matching pastel coloured cascade sanitary ware. Under counter washbasin with mirrors in all toilets. Acrylic bathtub in master bedroom toilet. Hot and cold mixer unit of Jaguar make or equivalent for shower in all toilets. Basin mixer for master bedroom toilets. Heath faucet and exhaust fan point for all toilets.

**DOORS & WINDOWS:** Teak Wood doorframes with threshold for Main Door. Main Door of teak, finished with melamine polish. All other door frames in sal wood. Flush doors for bedrooms painted to required shades. Brush steel finish hardware.

**KITCHEN:** Granite kitchen platform with Carysil sink with drain board. Provision for chimney, Aquaguard point and washing machine in utility area

**ELECTRICAL:** Concealed conducting with PVC insulated copper wires, superior modular switches (Roma/Crabtree) or equivalent. AC power pint for master bedroom. Generator back up with automatic load controller for each apartment. TV/Telephone point in living/dinning and master bedroom. Common areas with aesthetic lighting fixtures, emergency power for common area lighting, lifts and water pumps with back up power in all apartments. 3-Bedroom (1.5kVA) and 2-Bedroom (1.25kVA)

**WATER SUPPLY AND SANITARY:** Continuous water supply through bore wells and open wells. PVC lines for sewerage disposal with and concealed GI lines for water supply.

**LIFTS:** Automatic passenger lifts of OTIS/Schindler/Kone or equivalent make with 1 service lift for each building. Elegant lift lobbies with granite cladding of the lift well.

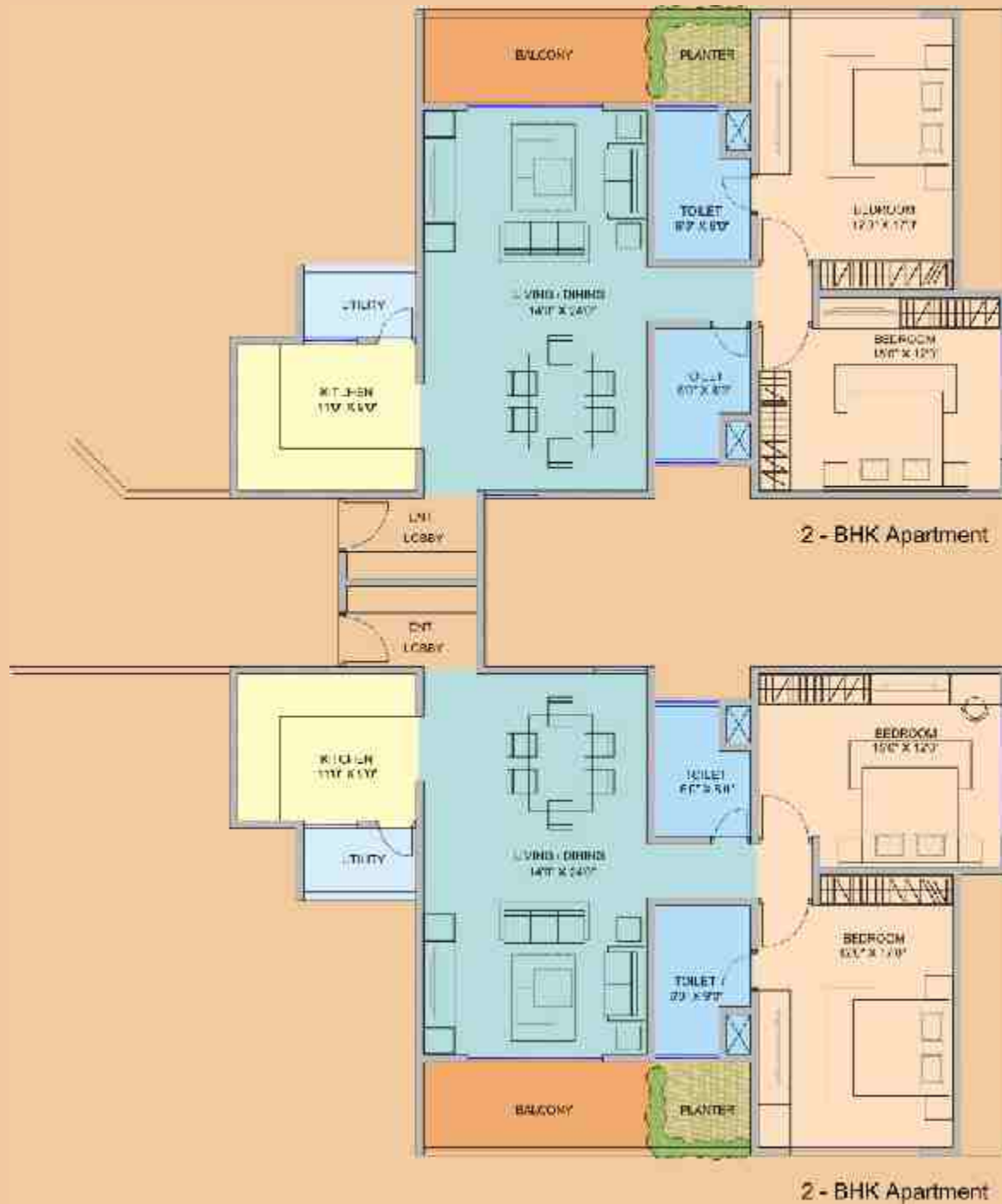
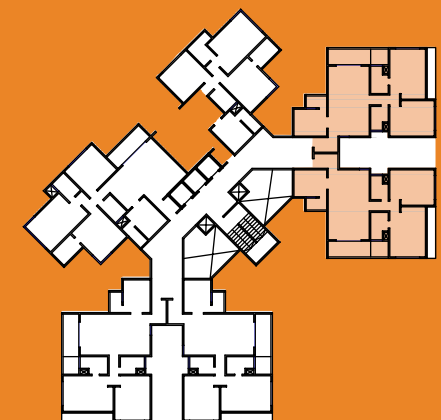
# Layout Plan





### Typical Floor Plan 2 Bed Rooms

- LIVING / DINNING
- TOILET
- KITCHEN
- BEDROOM
- BALCONY
- UTILITY

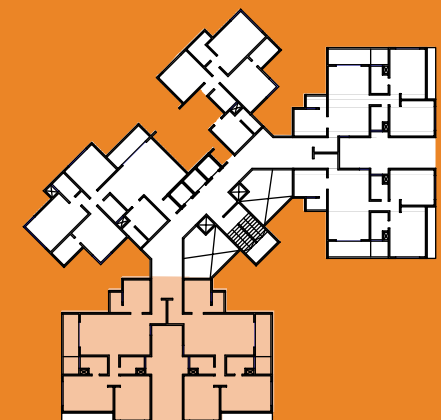




## Typical Floor Plan 2 Bed Rooms



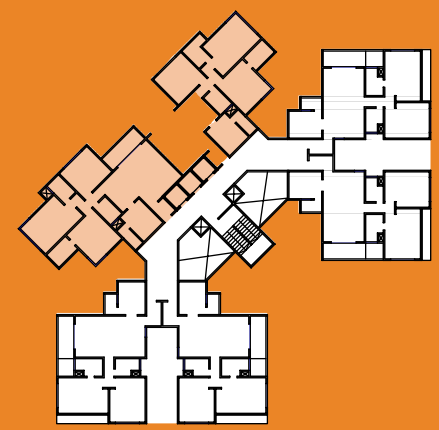
- LIVING / DINING
- TOILET
- KITCHEN
- BEDROOM
- BALCONY
- UTILITY



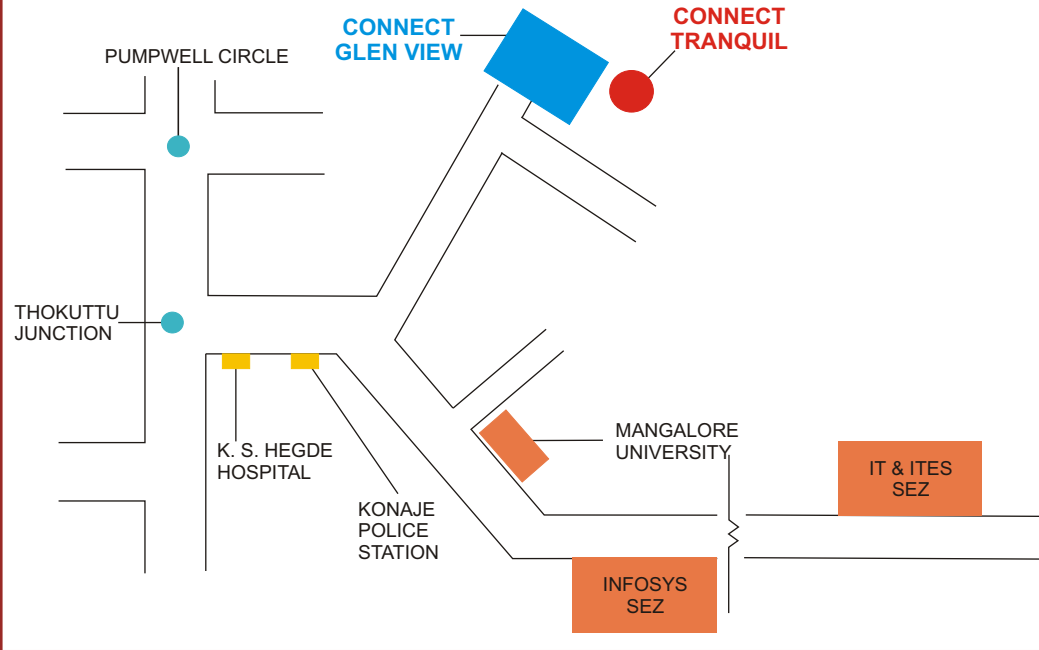


Typical Floor Plan  
3 Bed Rooms

- LIVING / DINNING
- TOILET
- KITCHEN
- BEDROOM
- BALCONY
- UTILITY



## LOCATION MAP



When Luxury Lifestyle and Value is an absolute necessity, Connect Developers has the perfect home solution for you, premium developments at the most prominent locations in Mangalore. All projects of Connect Developers are conceived and constructed by a team of experienced and dedicated professionals who work closely with customers to fulfill their dream of creating a perfect home.

With over 25 years of experience in the real estate industry, Connect Developers has over 1.75 million square ft. of development to its credit. Over the years our focus has been design excellence, functionality, quality of construction, minimal environmental impact and uncompromising delivery schedules, which has helped establish a sterling reputation for Connect Developers with our clients from around the World.

**CONNECT**  
Builders and Developers

### MANGALORE:

"Lavina", No 93, 3rd Cross, Kodialguthu,  
Off M. G. Road, Mangalore 575 001.

Tel: +91 824 4254 199

Fax: +91 824 4278 199

### BANGALORE:

# 274, V. R. Manor, 100 Feet Road,  
Indiranagar, Bangalore 560 038.

Tel: +91 80 4133 0054

Email: [info@connectdevelopers.com](mailto:info@connectdevelopers.com)

Web: [www.connectdevelopers.com](http://www.connectdevelopers.com)